

DUCTILE IRON STEAM TRAP with Sight Glass

MAIN CHARACTERISTICS

The steamtrap is a large capacity float steam trap dedicated to the draining in medium pressure installations. The typical application is heat exchangers' draining. With a ductile iron body, the steam trap has PN 16 flanges. In standard version, the steamtrap is equipped with an internal strainer to protect the mechanism. steamtrap has also a sight glass to control the flow of condensate. The standard version has to be installed horizontally or vertically and various inner mechanisms can be offered depending on the Δp .

AVAILABLE MODELS

Sizes DN32, DN40 and DN50 flanged PN 16.

Sizes 1"1/4, 1"1/2 and 2" screwed connections.

CLASSIFICATION ACC. TO PED 97/23

Homologation CE 0036 cat. II

LIMITS OF USE

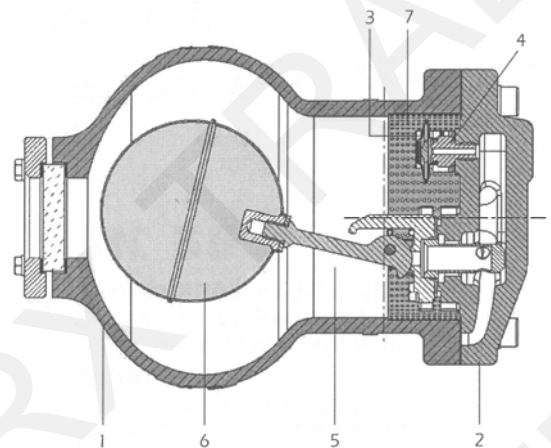
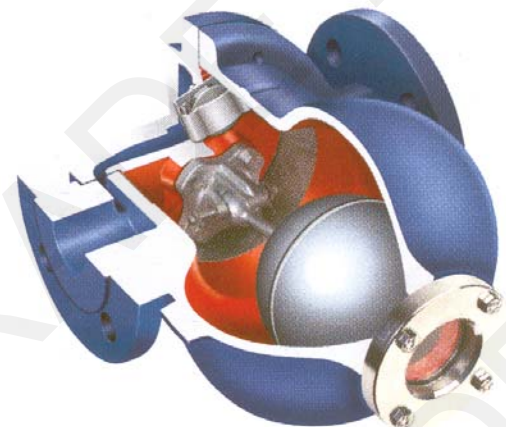
Max. operating pressure PS : 16 bar

Max. operating temperature TS : 250°C

Max. Δp : 4,5-10-14 bar

CONSTRUCTION

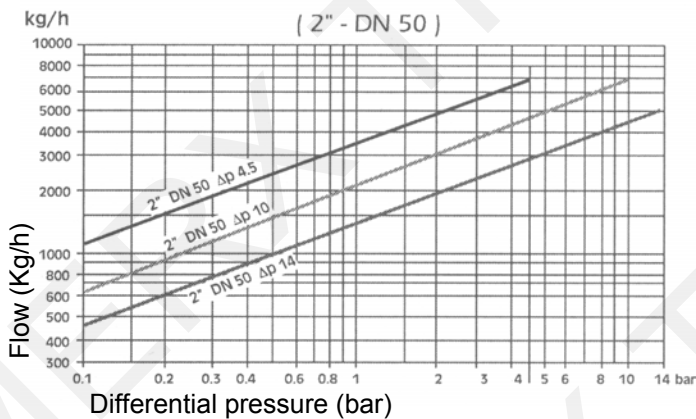
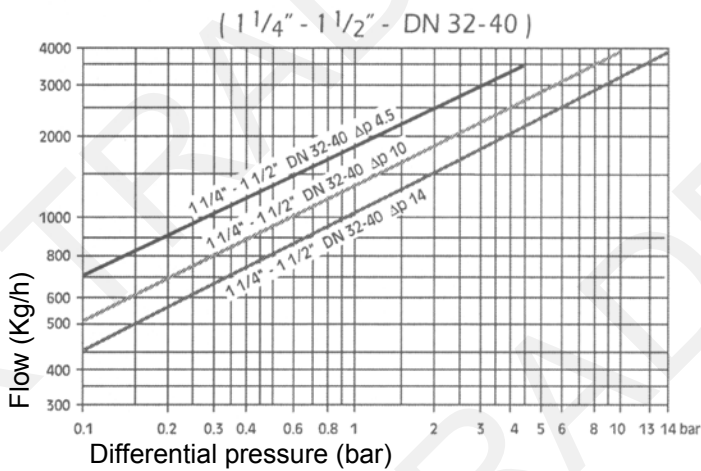
N°	Item	Material
1	Body	EN-GJS-400-18
2	Cover	EN-GJS-400-18
3	Thermostatic capsule	AISI 304
4	Thermostatic air vent	AISI 304
5	Float lever	AISI 304
6	Float	AISI 304
7	Strainer	AISI 304



Information provided as an indication and subject to possible modification. Colours and details can be different then shown in data sheets or pictures. Merxtrade BV has no liability for any damages by use off any information, displayed on these pages.

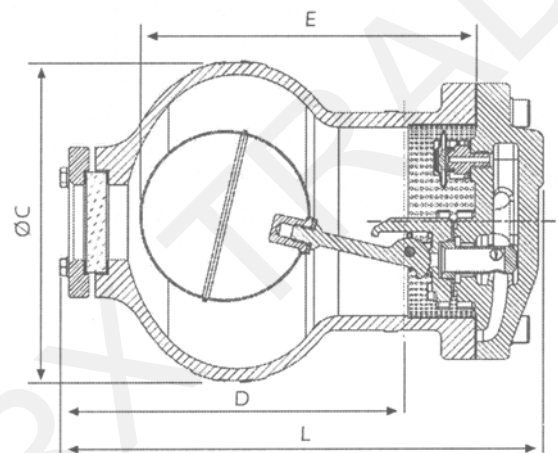
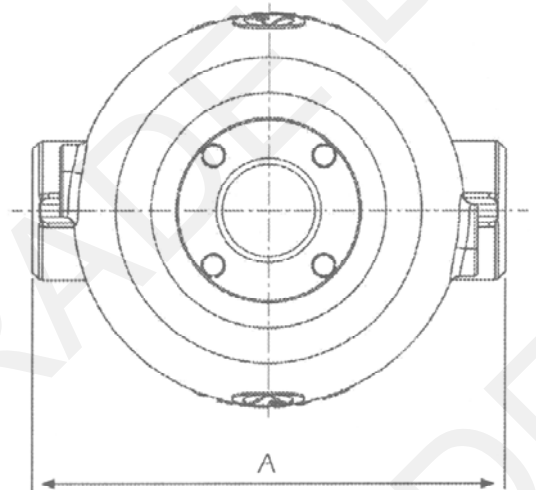
DUCTILE IRON STEAM TRAP with Sight Glass

FLOW RATES (Kg/ h)



DIMENSIONS (mm) AND WEIGHT (kg)

DN	A	ØC	D	E	L	Nb holes	W. (kg) flanged	W. (kg) Screwed
32	230	165	206	200	290	4	20,8	16,8
40	230	165	206	200	290	4	21,8	17,6
50	230	176	220	210	305	4	33	22



Information provided as an indication and subject to possible modification.
Colours and details can be different then shown in data sheets or pictures.
Merxtrade BV has no liability for any damages by use off any information,
displayed on these pages.

DUCTILE IRON STEAM TRAP with Sight Glass

INSTRUCTIONS FOR INSTALLATION

The steam trap must be installed at the lowest point of the piping to drain. As a standard, it is delivered for horizontal installation. Upstream the trap it is recommended to install a shut-off valve and a Y strainer to avoid any damage on the seat due to the passing of impurities. Downstream the trap must be connected to the condensate loop or to the sewage.

While installing the steamtrap, the right position has to be respected to allow the operation of the trap. Please respect the following two directions:

- 1 / steamtrap has to be installed horizontally taking care of the direction of the arrow stamped on the body : from steam pipe (upstream) to condensate pipe (downstream).
- 2 / Moreover the arrow written on the nameplate must be pointed to the ground.

Before installing the trap, shut of the line and remove the pressure. Wait for complete cooling of the line before any operating. Clean carefully the upstream line. Screw the trap on the line after having verified the direction of the two arrows. For the flanged type, use flange's gaskets adapted to steam service. For the bolting of the flanges, use following dimensions.

Size	N° of bolts	Diameter	Length
32, 40 et 50	4	M16	110

DIS-ASSEMBLING AND MAINTAINING

It is not necessary to disassemble the trap from the pipe to proceed to his maintaining :

1. Shutt-off the upstream valve.
2. Drain the downstream line.
3. Verify that there is no pressure and temperature inside the line.
4. Unscrew the 4 bolts of the cover (item 2).
5. Verify the state of the float (item 6). Also verify the state of the lever and the seat (item 5). Clean and/or replace the damaged parts if necessary.
6. Verify the state of the capsule (item 3). Replace it if necessary and clean the seat.
7. Replace the body gasket and re-assemble the cover (item 2).