

2 PIECES HIGH PRESSURE CARBON STEEL BALL VALVE FEMALE BSP

2 pieces high pressure carbon steel ball valve for closing networks of fluids in hydraulic installation.
POM and NBR gaskets.

Compatible with explosive atmosphere, ATEX Zone 1&21 and Zone 2&22 thanks to the double antistatic device.



PED 2014/68/UE



Size : DN1/4" to DN2"

Connection : Female BSP

Min Temperature : -20°C (-30°C for DN1"1/2 and 2")

Max Temperature : +100°C

Max Pressure : 350-500 Bars

Specifications : ATEX

Reduced bore

High pressure

Hydraulic type

Materials : Galvanized Carbon steel 1.0737

2 PIECES HIGH PRESSURE CARBON STEEL BALL VALVE FEMALE BSP

SPECIFICATIONS :

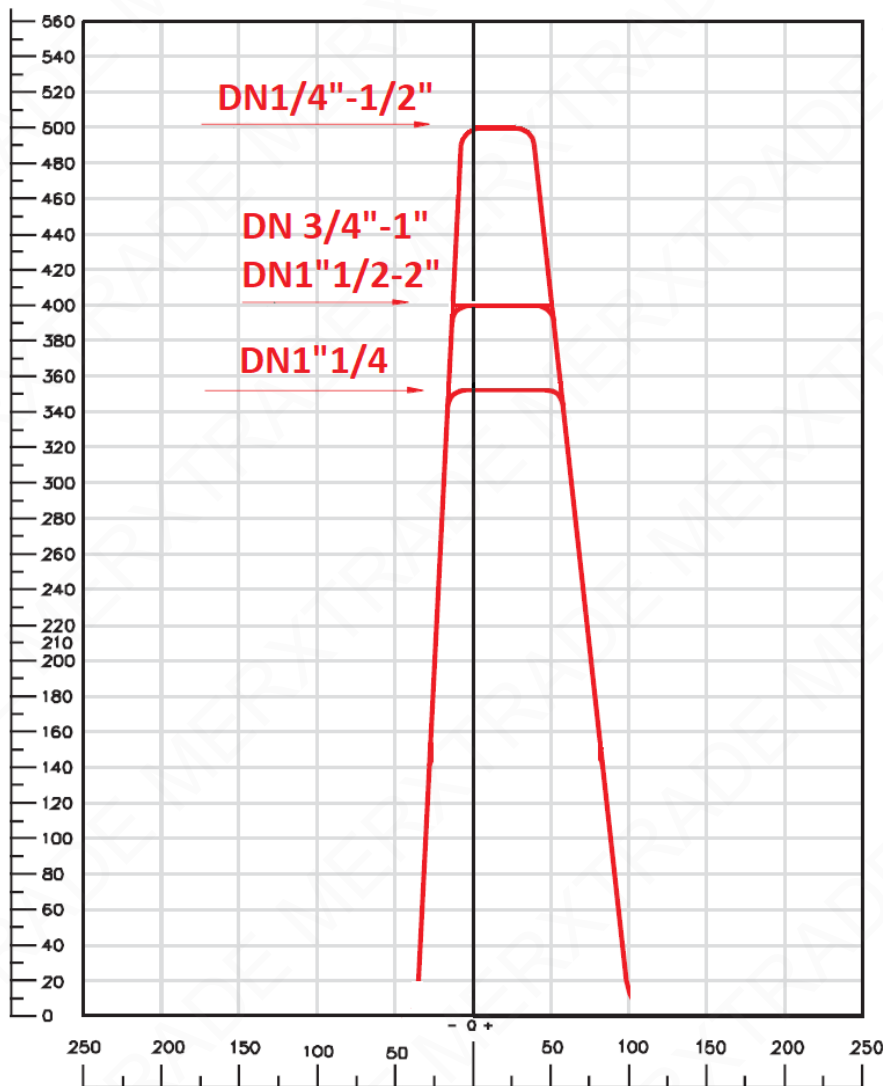
- Reduced bore
- Galvanized steel
- High pressure
- Hydraulic type

USE :

- For hydraulic installation
- Min and max Temperature Ts from DN1/4" to DN1"1/4: -20°C to + 100°C
- Min and max Temperature Ts from DN1"1/2 to DN2": -30°C to + 100°C
- Max Pressure Ps : 500 bars from DN1/4" to 1/2", 420 bars over, excepted DN1"1/4 :350 bars (see graph)

PRESSURE / TEMPERATURE GRAPH (STEAM EXCLUDED) :

PRESSURE (Bar)



Temperature (°C)

2 PIECES HIGH PRESSURE CARBON STEEL BALL VALVE FEMALE BSP**FLOW COEFFICIENT Kvs (M3 / h) :**

DN	1/4"	3/8"	1/2"	3/4"	1"	1"1/4"	1"1/2"	2"
Kvs (m3/h)	4.2	6	30.2	53.7	90.6	90.6	245.2	364.5

TORQUE VALUES (in Nm without safety coefficient) :

DN	1/4"	3/8"	1/2"	3/4"	1"	1"1/4"	1"1/2"	2"
Torque (Nm)	16	18	25	45	72	90	160	250

RANGE :

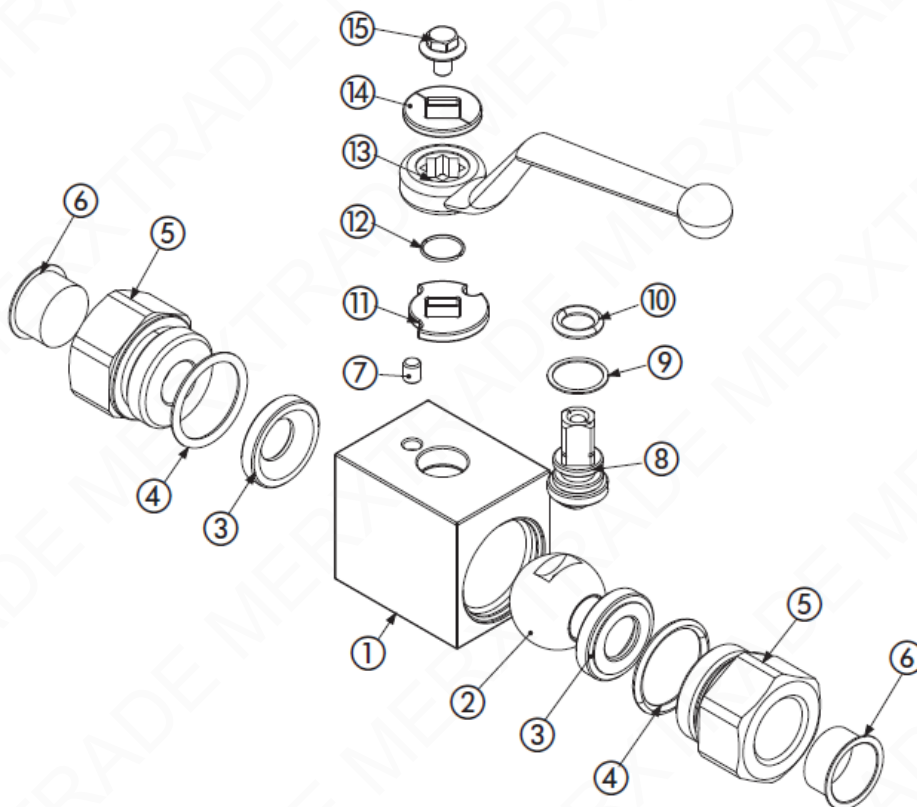
- High pressure ball valve with galvanized steel body from DN1/4" to DN2"

CONNECTION :

- Threaded cylindrical female BSP

2 PIECES HIGH PRESSURE CARBON STEEL BALL VALVE FEMALE BSP

MATERIALS DN1/4" - 1"1/4: :



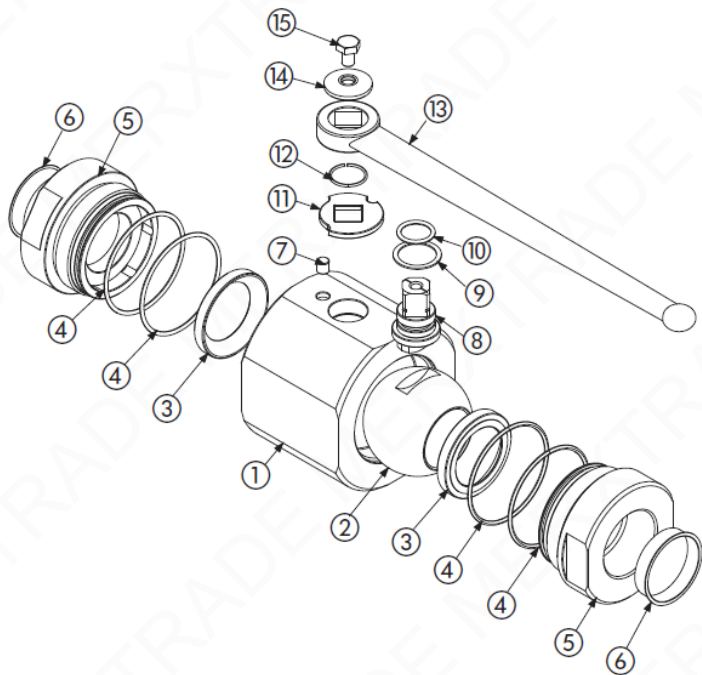
Item	Designation	Materials DN 1/4" - 1"1/4
1	Body	Galvanized 1.0737 steel
2	Ball	Chromed 1.0737 steel
3	Seat	POM
4	O-ring	NBR
5	Ends	Galvanized 1.0737 steel
6	Caps	PVC
7	Spine	Steel 1.0737
8	Stem	Steel 1.0737
9	Stem seal	POM
10	O-ring	NBR
11	Washer	Steel 1.0116
12	Seeger	Steel 1.4301
13	Handle	Aluminium
14	Handle washer	Steel 1.0116
15	Handle screw	Steel DIN 6921 8.8

2 PIECES HIGH PRESSURE CARBON STEEL BALL VALVE FEMALE BSP

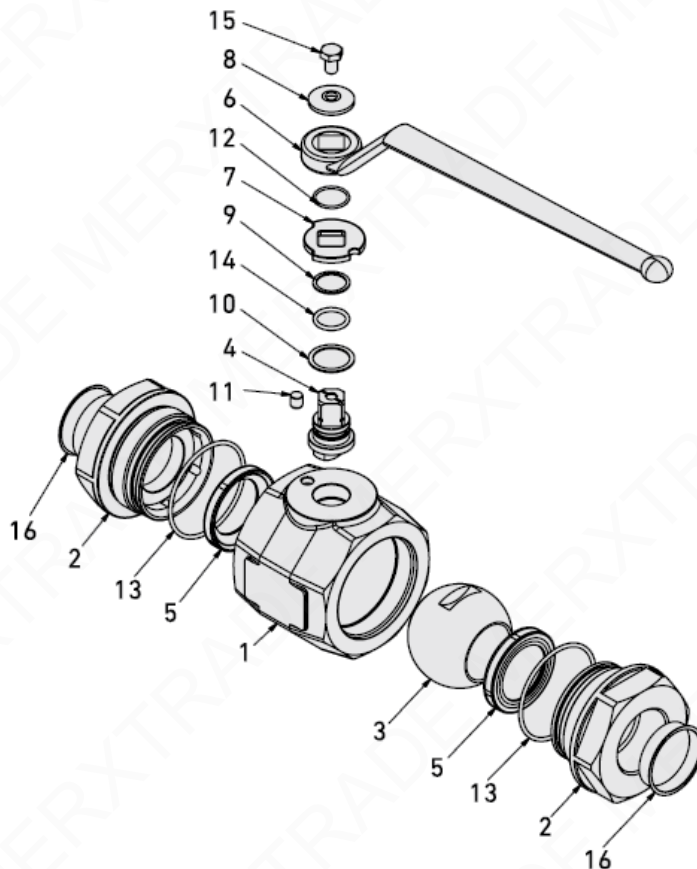
MATERIALS DN1"1/2 - 2":

MODIFICATION IN PROGRESS

Actual type



New type

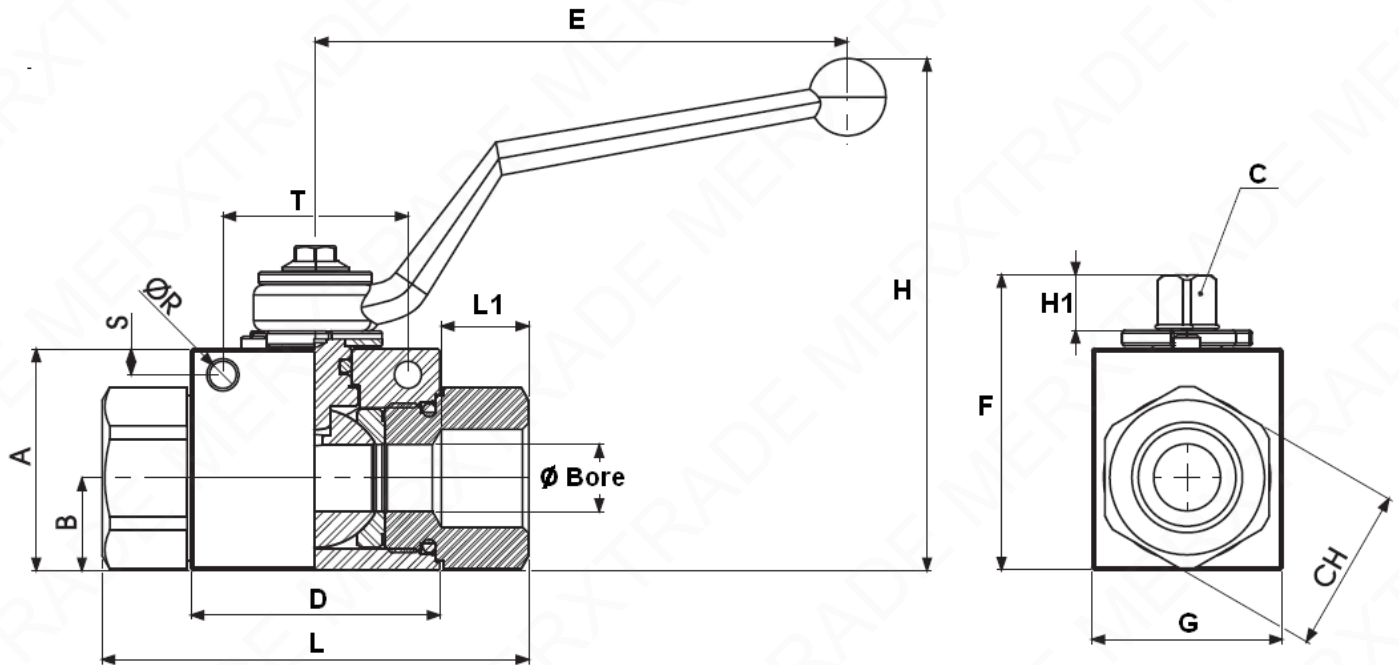


ACTUAL TYPE		
Item	Designation	Materials DN 1"1/2 - 2"
1	Body	Galvanized 1.0570 steel
2	Ball	Chromed 1.0737 steel
3	Seat	POM
4	O ring	NBR
5	Ends	Galvanized 1.0570 steel
6	Caps	PVC
7	Spine	Steel 1.0737
8	Stem	Steel 1.0737
9	Stem gasket	POM
10	O ring	NBR
11	Washer	Steel 1.0116
12	Seeger	Stainless Steel 1.4301
13	Handle	Steel 1.0116
14	Washer	Steel 1.0737
15	Handle screw	Steel ISO 4017 8.8

NEW TYPE		
Item	Designation	Materials DN 1"1/2 - 2"
1	Body	Galvanized 1.0570 steel
2	Ends	
3	Ball	Chromed 1.0737 steel
4	Stem	Steel 1.0737
5	Seat	POM
6	Handle	Steel 1.0116
7	Washer	
8	Handle washer	Steel 1.0737
9	Ring	PTFE
10	Stem gasket	POM
11	Stop	Steel 1.0737
12	Washer	1.4301
13	Body O-ring	NBR
14	Stem O-ring	
15	Screw	Steel ISO 4017 8.8
16	Caps	PVC

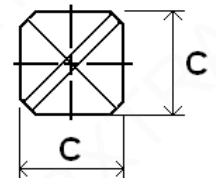
2 PIECES HIGH PRESSURE CARBON STEEL BALL VALVE FEMALE BSP

SIZE DN1/4" - 1"1/4 (in mm):



DN	1/4"	3/8"	1/2"	3/4"	1"	1"1/4
Ø Bore	6	10	13	20	25	25
L	71	73	83	95	112	120
L1	15.5	15.5	17	21	24	24
E	110	110	110	180	180	180
H	91.5	96.5	99.5	106.5	116.5	116.5
H1	11	11	11	14	14	14
A	35	40	43	55	65	65
B	14.5	17.4	18	23.4	29.5	29.5
C	9	9	9	14	14	14
CH	24	30	32	41	50	55
D	42.4	44.4	48.4	62.5	66.5	66.5
F	49	54.25	57	73.5	83.5	83.5
G	30	35	37	45	55	55
Ø R	5.25	5.25	5.25	6.25	6.25	6.25
S	4.5	4.5	5	6	6	6
T	34	34	36	50	50	50
Weight (Kg)	0.49	0.64	0.76	1.44	2.22	2.27

Stem size :

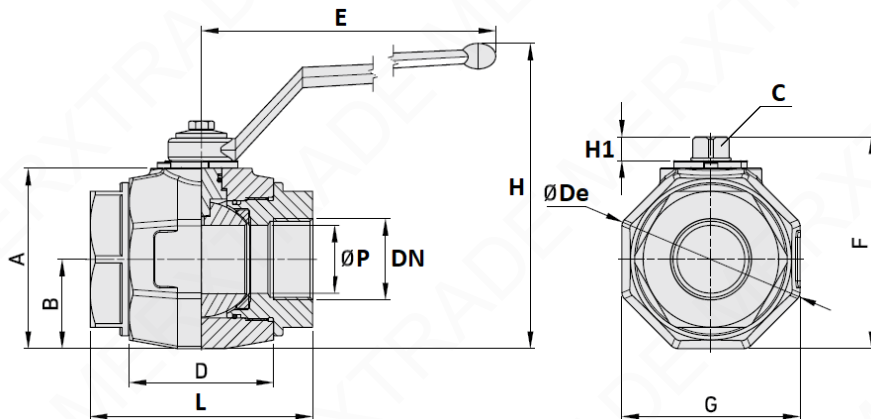


2 PIECES HIGH PRESSURE CARBON STEEL BALL VALVE FEMALE BSP

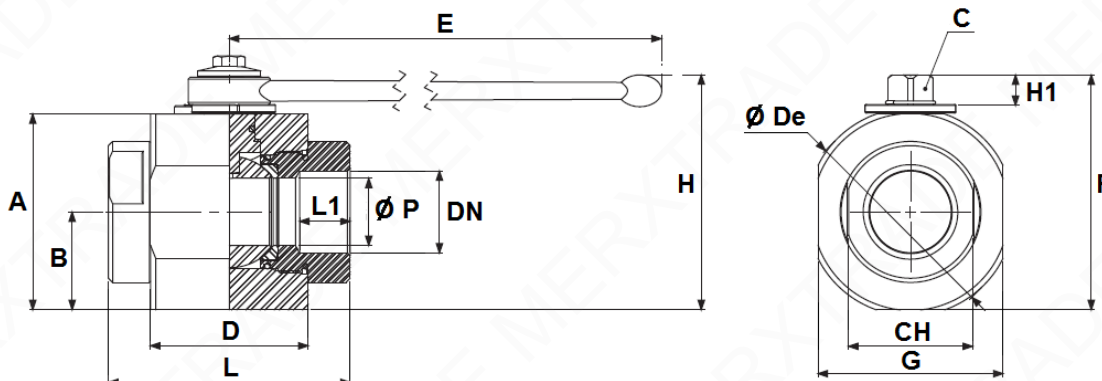
SIZE DN1"1/2 - 2" (in mm):

MODIFICATION IN PROGRESS

NEW TYPE

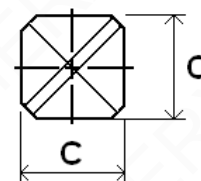
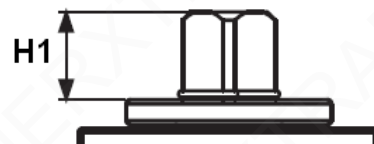


ACTUAL TYPE



DN	1"1/2	1"1/2 NEW	2"	2" NEW
Ø P		40		50
L		131		140
L1		25		27
E	300	310	300	310
H	134.5	179.5	141.5	189
H1	13.5	14	13.5	14
A	107	106	114	115.5
B	53.5	52.5	57	58.5
C		17		17
CH		75		85
D		85		98
F	125.5	124.5	132.5	134
G	102	105	118	117
Ø De		113	123	126
Weight (Kg)	7.39	6.75	9.05	8.71

Stem size :



2 PIECES HIGH PRESSURE CARBON STEEL BALL VALVE FEMALE BSP

STANDARDS :

- Manufacturer certified ISO 9001 : 2015
- DIRECTIVE 2014/68/EU : Products excluded from directive (Article 4, § 3) up to DN1"
- DIRECTIVE 2014/68/EU : Risk category II Module A2, **CE N°0948** from DN1"1/4 to 2"
- Tests according to API 598
- Threaded cylindrical BSP ends according to ISO 228-1
- On request, ATEX Group II Category 2 G/2D Zone 1 & 21 Zone 2 & 22 (optional marking) according to directive 2014/34/UE

ADVICE : Our opinion and our advice are not guaranteed and merxtrade shall not be liable for the consequences of damages. The customer must check the right choice of the products with the real service conditions.

INSTALLATION AND MAINTENANCE

BEFORE INSTALLATION :

Pipe-line must be cleaned and free from residual of weldings, rubbish, shaving and every kind of extraneous materials. Pipe-line must be perfectly aligned and their support properly dimensioned so that there's no external constraint.

Please use the right product according to the services conditions to seal the valve. Use the right bolt tightening so that the ends won't be damaged.

CLEANING AND TESTS

Keep closed the valves during the cleaning operation so that there's no impurities between the ball and the body.

Tests under pressure must be done with a cleaned pipe-line.

Open partially the valve for tests. Pressure test do not exceed the valve specifications according to API 598.

MAINTENANCE

It's recommended to operate the valve twice (open and close) 1 to 2 times per year.

When intervention on the valve, be sure there's no pressure in the pipe-line, there's no fluid in it, and that it is isolated. The temperature must be low enough to operate without risks. If there's a corrosive fluid, inert installation before intervention.